

TIBCO RTView Standard Monitor

BENEFITS

MODERNIZE

Rapidly design, create, and deploy dashboards, reports, and alerts across the enterprise with little programming.

CENTRALIZE MONITORING

Consolidate TIBCO Hawk[®] monitoring across multiple domains and transports into central, high-level displays and even provide displays in browsers, portals, and mobile devices.

PROVIDE HISTORICAL CONTEXT

Persist Hawk statistics and content to an historical database for trend analysis.

CUSTOMIZE TO YOUR NEEDS

Customize specialized displays to fit the unique needs of each business, such as alerting and reporting functionality.

AUTOMATE

Implement command and control capability such as issuing TIBCO Hawk commands or setting SNMP traps.

AT A GLANCE

TIBCO[®] RTView[®] Standard Monitor provides an environment for rapidly developing and deploying custom monitoring applications that analyze, present, and control real-time information. It comes with RTView Builder that lets you create customized dashboards using a point-and-click palette.

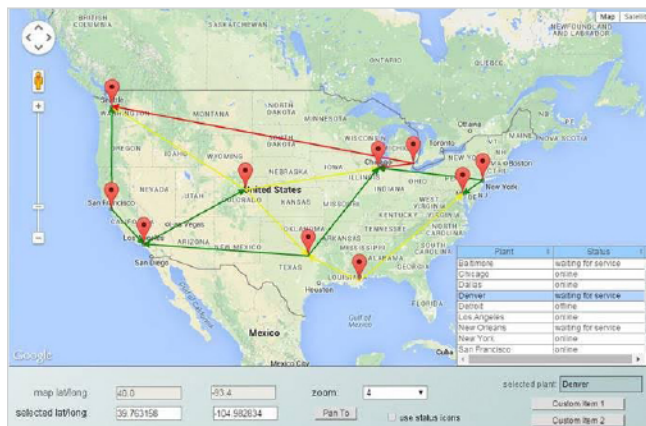
LEVERAGE MANY DATA SOURCES

TIBCO RTView Standard Monitor enables technology and application support teams to build sophisticated, interactive, and custom monitoring applications with real-time and historical data from almost any enterprise data source. The environment includes tools for customization, integration, and dashboard construction, and comes with a number of example displays for monitoring TIBCO performance metrics as well as adapters for real-time streaming and persisted TIBCO performance data.

CUSTOMIZE YOUR DASHBOARDS

With RTView Builder, you can quickly create flexible, customized dashboards that provide at-a-glance access to critical business operation data. Using a point-and-click palette, you can select from a variety of graphic objects and attach them to live and archived data. RTView Builder features a wide selection of meters, gauges, tables, graphs, and scales.

- Quickly create and deploy high performance, web-enabled monitoring applications using the latest HTML 5 technologies
- Configure displays through an intuitive click-and-drag environment with minimal programming
- Extend or customize any TIBCO RTView Standard Monitor display or alert
- Implement control functions: stop and start processes, issue commands, and restart engines or servers
- Create interactive displays with embedded Google Maps

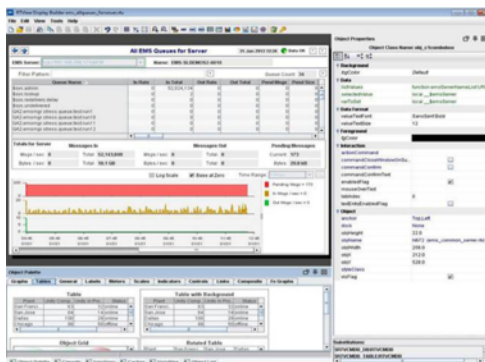


ATTRIBUTES & CAPABILITIES

DATA ADAPTERS

TIBCO RTView Standard Monitor includes the following data adapters:

- XML
- TIBCO Message-oriented Middleware
 - TIBCO Hawk
 - TIBCO Enterprise Messaging Service™ and TIBCO Enterprise Messaging Service™ Central Administration
 - TIBCO Rendezvous™
- Optional Adapters
 - JMX
 - SQL



The RTView Builder provides greater flexibility in customizing displays, reports, and alerts.

ALERTS

TIBCO RTView Standard Monitor features a sophisticated real-time alert engine that enables monitoring the health and status of business operations. The alert engine can monitor conditions and perform automated actions from any available RTView data source.

Four alert types are supported: Limits, Discrete, Multi-state, and Event.

AUTOMATED ACTIONS BASED ON ALERTS

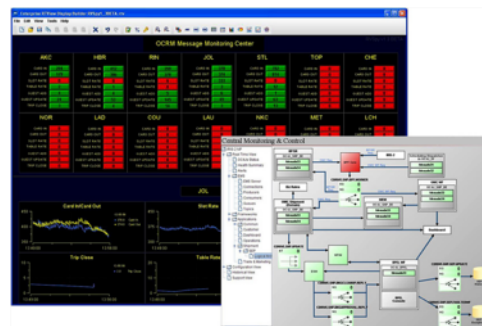
Alerts can automate actions such as sending email, issuing system commands, executing a SQL statement, or sending JMS messages. Custom alerts are easily created in TIBCO RTView Standard Monitor using the RTView Builder to add and configure properties.

SELF-SERVICE ALERTS

Support for self-service alerts is provided, giving you the ability to modify thresholds and durations and to enable settings of alert definitions at runtime via an easy-to-use interface.

ALERT EVENT MANAGEMENT

An alert action audit feature tracks actions taken by individual users to resolve situations related to active alerts. Alert audits also help validate



TIBCO RTView Standard Monitor enables users to quickly deploy sophisticated, custom monitoring applications.

that correct actions were performed in a timely fashion when critical events occur and are often valuable for fine tuning work flow.

DATA HISTORIAN

The product's Data Historian enables more effective analysis of metrics by providing views of real-time data that are presented with historical context. The Historian is commonly used for:

- *Business, Operations, and Performance Analysis*
Implement trend charts to view and compare current real-time data with historical values and perform calculations on a wide range of metrics over time.
- *Baselines and Alerting*
Create alerts when current metrics are outside the normal range using historical data as the baseline.
- *Reporting and Audit Trails*
Create a database that you can leverage for a variety of reporting or auditing tools and for surveying your historical data.

The Historian enables you reduce the amount of data stored through rules that define how the data is aggregated and compacted.



Global Headquarters
3307 Hillview Avenue
Palo Alto, CA 94304
+1 650-846-1000 TEL
+1 800-420-8450
+1 650-846-1005 FAX
www.tibco.com

TIBCO Software Inc. is a global leader in infrastructure and business intelligence software. Whether it's optimizing inventory, cross-selling products, or averting crisis before it happens, TIBCO uniquely delivers the *Two-Second Advantage*™— the ability to capture the right information at the right time and act on it preemptively for a competitive advantage. With a broad mix of innovative products and services, customers around the world trust TIBCO as their strategic technology partner. Learn more about TIBCO at www.tibco.com.

©2013-2015, TIBCO Software Inc. All rights reserved. TIBCO, the TIBCO logo, TIBCO Software, and TIBCO Enterprise Message Service, Hawk, and Rendezvous are trademarks or registered trademarks of TIBCO Software Inc. in the United States and/or other countries. RTView is a trademark or registered trademark of Sherrill-Lubinski Corporation in the United States and/or other countries. All other product and company names and marks in this document are the property of their respective owners and mentioned for identification purposes only.
08/26/15